

Champagne Tourney Vilnius 2019

The Tourney is opened only to Congress Participants
(collaboration between participant(s) and non participant(s) is allowed)

The Tourney is divided in 2 sections (with separate awards) :

A . ProofGames B. Any other kind of Retro problems

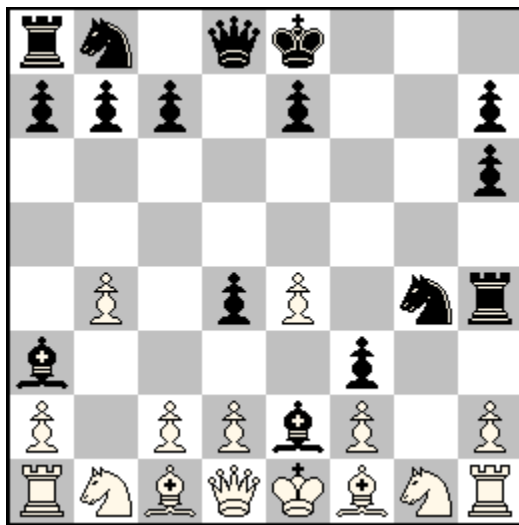
Theme : **Bristol**

A piece, white or black, (retro-)leaves square x.

Another piece of same color (retro-)plays in same direction, crossing square x.

Example for Section A :

Gligor DENKOVSKI, Ivan DENKOVSKI, Michel CAILLAUD
Phénix 2016



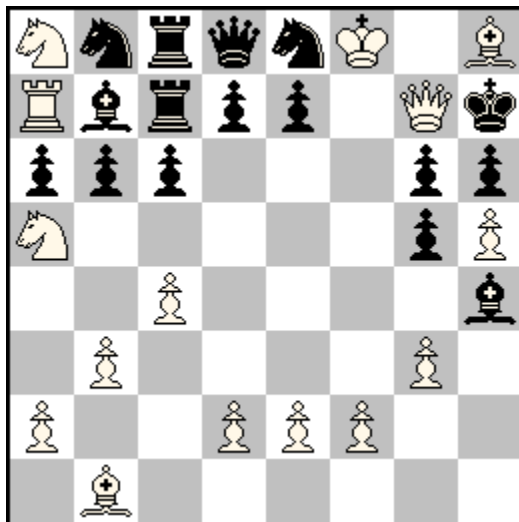
SPG 16,5

(15+16) C+

1.é4 Sf6 2.Dh5 Tg8 3.Dh6 g×h6 4.b4 Tg4 5.Lb2 Th4
6.g4 d5 7.g5 Lg4 8.g6 Lé2 9.g7 Sg4 10.g8=D f5
11.Lh8! f4 12.Dg7 f3 13.**Db2** (=move from g7) Lg7
14.Dç1 Lb2 15.Dd1 La3 16.**Lb2** (=move over g7) d4 17.Lç1

Example for Section B :

Dragan PETROVIC
Mémorial B. Pavlovic, Problem 1981
1° Prize



Last move ?

(15+16)

- 1. **Da1-g7+** (=retro-move from g7) f7×Tg6
- 2. **Lb2-h8** (=retro-move over g7) Kh8-h7
- 3. Tf6-g6+ Kh7-h8 -4. Tf5-f6+ Kh8-h7 -5. Tè5-f5+ Kh7-h8
- 6. Tè4-é5+ Kh8-h7 -7. Td4-é4+ Kh7-h8 -8. Td3-d4+ Kh8-h7
- 9. Tç3-d3+ Kh7-h8 -10. Tç2-ç3+ Kh8-h7 11. ç3-ç4+ Kh7-h8
- (-12. Sç4-a5 -13-14. Sf5-é3-ç4 -15. Tç1-ç2
- 16-18. Lf1-g2-é4-b1 -19. g2-g3 Lg3-h4 -20. h4-h5)

Fairy conditions (but not fairy pieces) allowed in both sections.

Maximum 3 entries per composer per section.

(collaboration counts for 1 full entry)

Maximum 1 non computer tested entry per composer in section A

Prizes in each section : a Champagne bottle for the first place

Entries to the judge, Michel Caillaud, by Wednesday 21st August 9:00 PM

e-mail : caillaud1957@gmail.com