

NAUJI UŽDAVINIAI Nr.2/2018

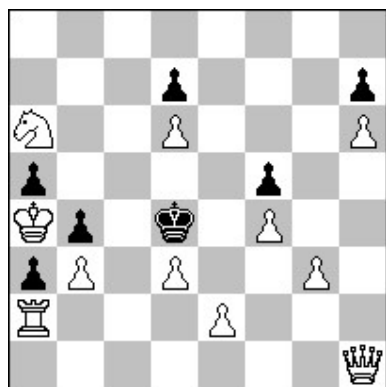
ORIGINALS *** INEDITES *** URDRUCK *** ПУБЛИКУЕТСЯ ВПЕРВЫЕ

Skyrelį tvarko:

Vilimantas SATKUS
Parko g. 2A,
LT-58351 Akademija, Kėdainių rj., Lithuania
vilimantas.satkus@gmail.com

Autorių prašome sprendimuose figūras ženklinti raidėmis, nes neretai simboliai pavirsta nesuprantamais makaronais. *Welcome in „Šachmatija“!*

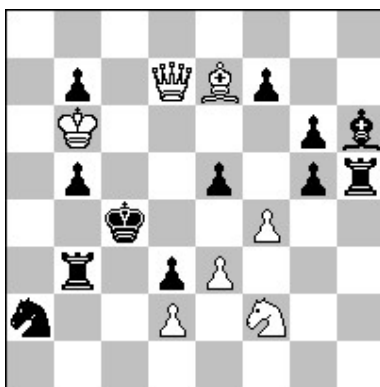
3777 S. ŠALETIĆ
Belgradas, Serbija



2*

(11 + 7)

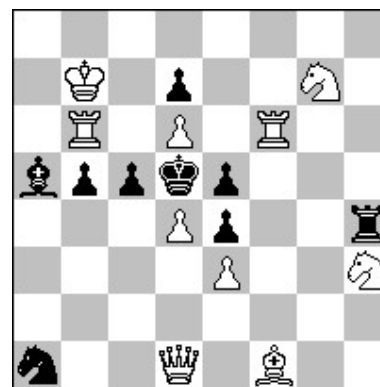
3778 E. TRACHTMAN
Dnepras, Ukraina



2 vvv

(7 + 12)

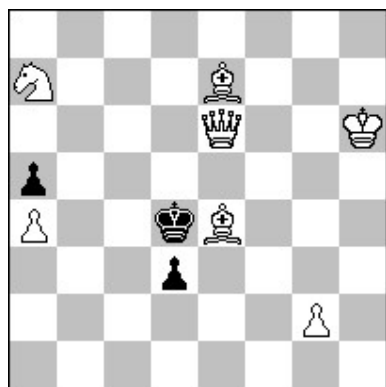
3779 Z. LABAI
Velky Kyras, Slovakija



2*vvv

(10 + 9)

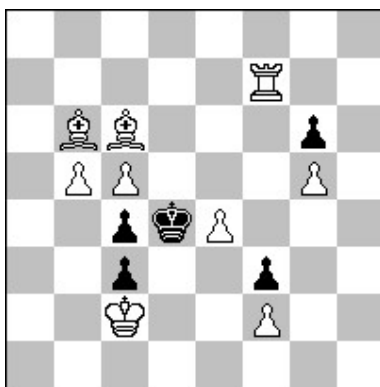
3780 P. PETRAŠINOVIĆ
Belgradas, Serbija



3

(7 + 3)

3781 Z. LABAI
Velky Kyras, Slovakija

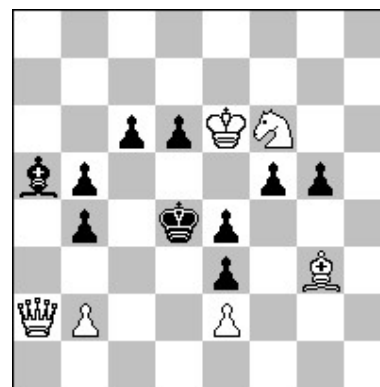


3

b)Bf7→a7

(9 + 5)

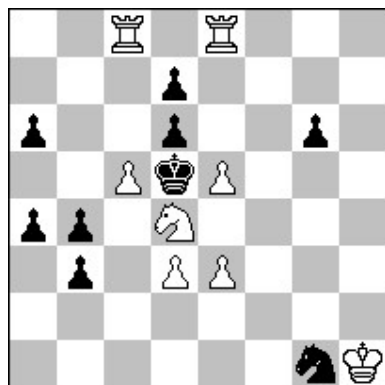
3782 R. ALIOVSADZADE
Lincoln, JAV



3

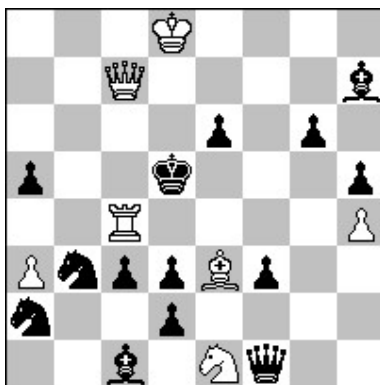
(6 + 10)

3783 G. ATAJANC
Proletarskas, Rusija



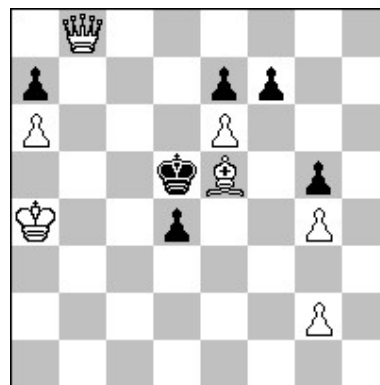
3 (8 + 9)

3784 M. MARANDIUK
Novoselica, Ukraina



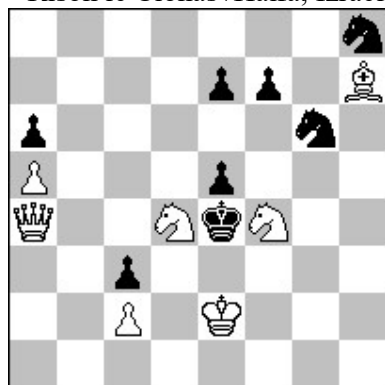
3 (7 + 14)

3785 P. PETRAŠINOVIĆ
Belgradas, Serbija



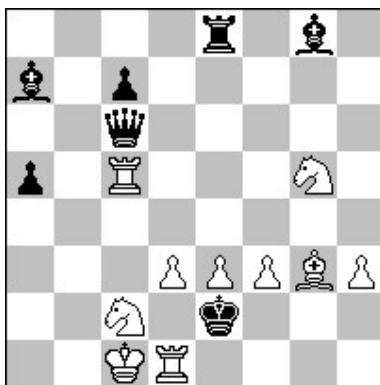
4 (7 + 6)

**3786 L. LIUBAŠEVSKIJ,
L. MAKARONEC**
Rišon le Cionas /Haifa, Izraelis



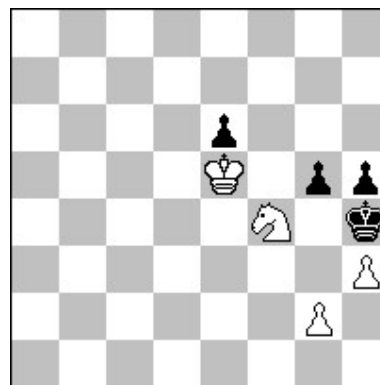
4 (7 + 8)

3787 M. MARANDIUK
Novoselica, Ukraina



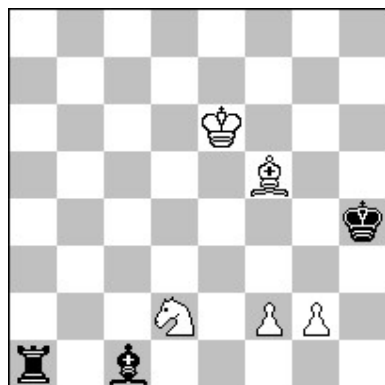
5 (10 + 7)

3788 V. BARSUKOV
Sankt Peterburgas, Rusija



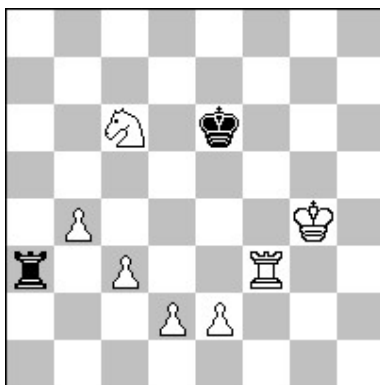
h # 2 b)-Žf4 (4 + 4)

3789 V. BARSUKOV
Sankt Peterburgas, Rusija



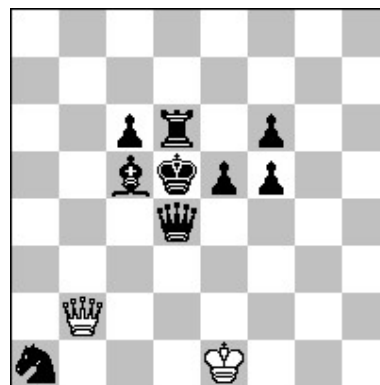
h # 2 3.1.1.1 (5 + 3)

3790 N. AKIMOV
Ščučinskas, Kazachstanas



h # 2 4.1.1.1 (7 + 2)

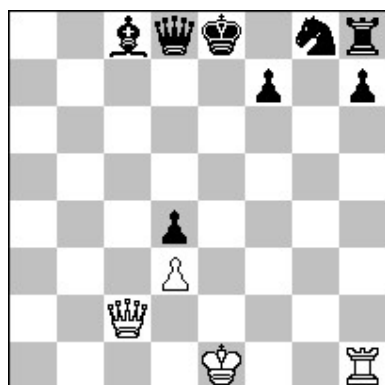
3791 J. F. CARF
La Ferté Saint Aubin, Prancūzija



h # 2 2.1.1.1 (2 + 9)

3792 Pascale PIET

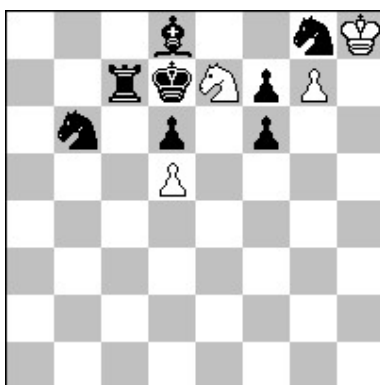
Saint Jean de Bray, Prancūzija



h # 2 2.1.1.1 (4 + 8)

3793 Pascale PIET

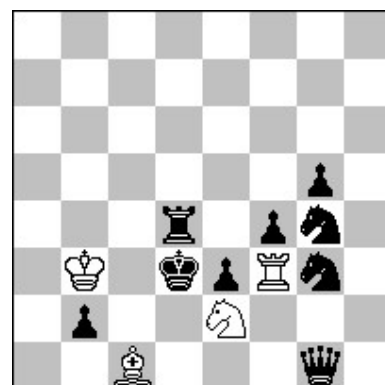
Saint Jean de Bray, Prancūzija



h # 2 2.1.1.1 (4 + 8)

3794 N. POPA

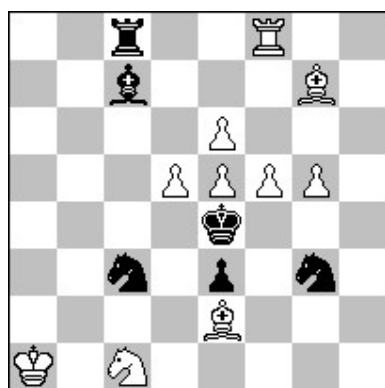
Arsura – Vaslui, Rumunija



h # 2 2.1.1.1 (4 + 9)

3795 A. ONKOUD

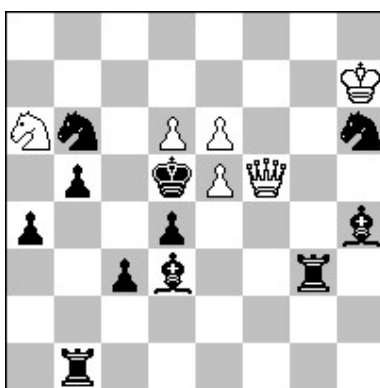
Stenas, Prancūzija



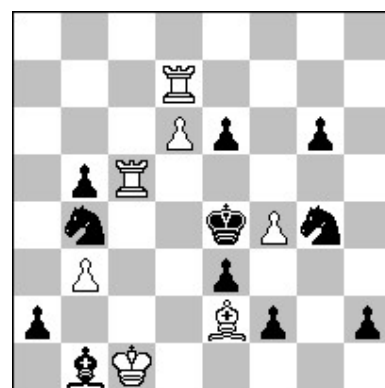
h # 2 4.1.1.1 (10 + 6)

3796 A. ONKOUD

Stenas, Prancūzija

h # 2 (6 + 11)
b,c,d)pd6→g5,e2,b2**3797 Z. LABAI**

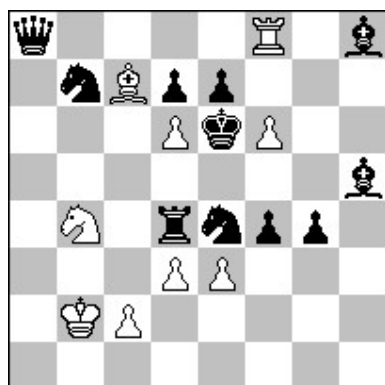
Velky Kyras, Slovackija



h # 2 3.1.1.1 (7 + 11)

3798 A. ONKOUD

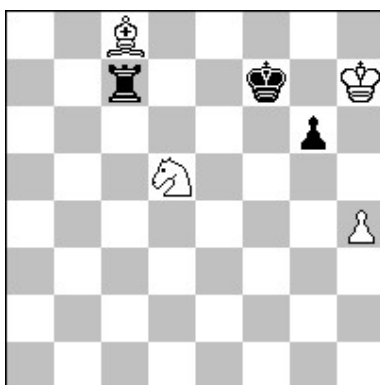
Stenas, Prancūzija



h # 2 4.1.1.1 (9 + 11)

3799 N. ZUJEVAS

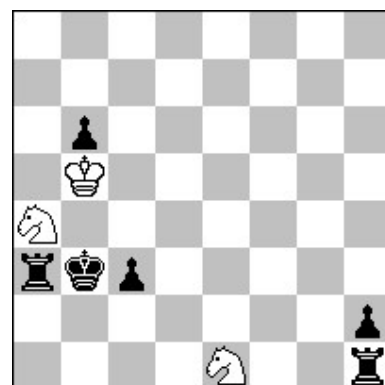
Klaipeda



h # 2,5 0.2.1.1.1.1 (4 + 3)

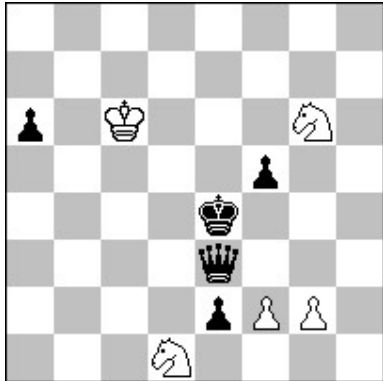
3800 V. BARSUKOV

Sankt Peterburgas, Rusija



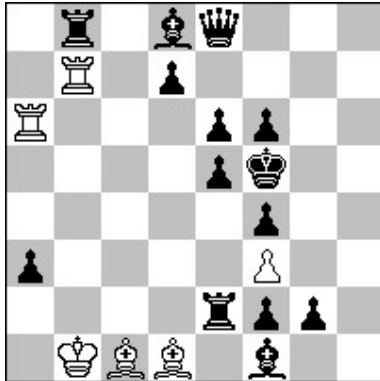
h # 2,5* (3 + 6)

3801 N. POPA
 Arsura – Vaslui, Rumunija



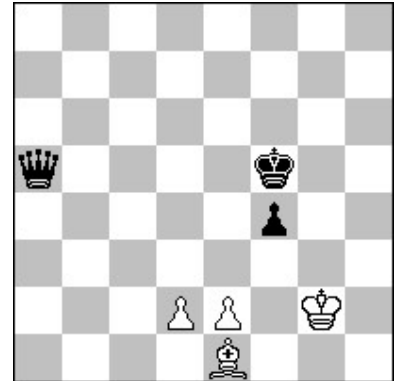
h # 2,5 0.2.1.1.1.1 (5 + 5)

3802 V. KOPIL
 Poltava, Ukraina



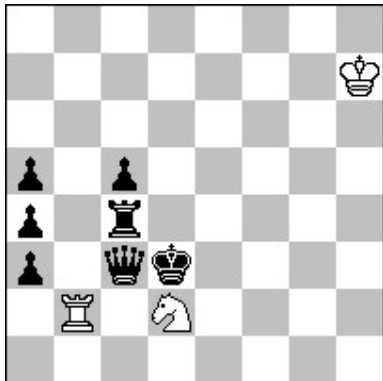
h # 2,5 0.2.1.1.1.1 (6 + 14)

3803 N. ZUJEVAS
 Klaipeda



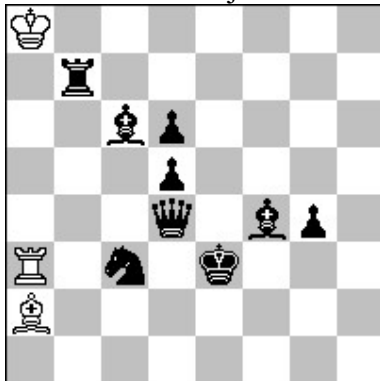
h # 3 2.1.1.1.1.1 (4 + 3)

3804 V. BARSUKOV
 Sankt Peterburgas, Rusija



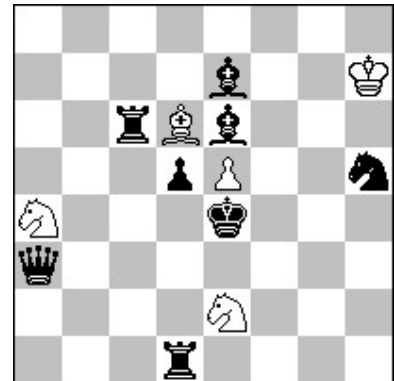
h # 3 b)a3→d4 (3 + 7)

**3805 A. IVUNIN,
 A. PANKRATJEV**
 Rusija



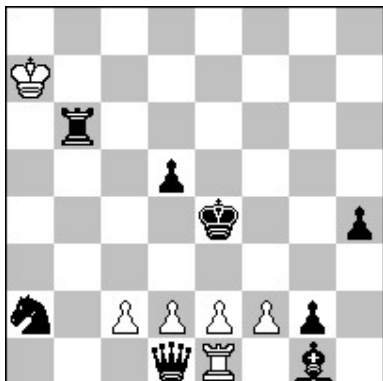
h # 3 b,c)Ke3→e5,g6 (3 + 9)
 d)Rf4→c1

3806 N. POPA
 Arsura – Vaslui, Rumunija



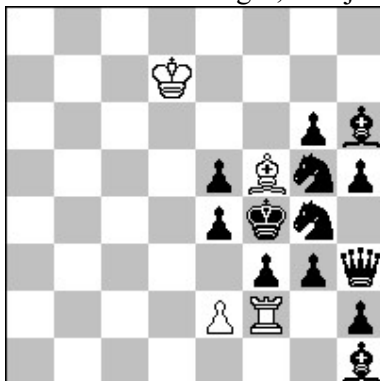
h # 3 b)bpe2 (5 + 8)

3807 Z. LABAI
 Velky Kyras, Slovakija



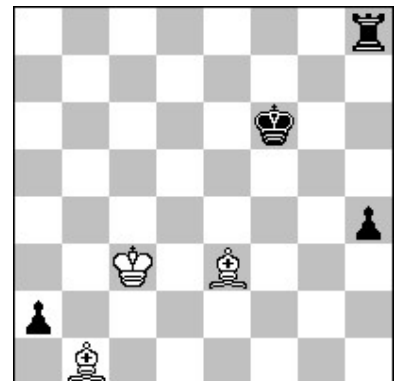
h # 3 2.1.1.1.1.1 (6 + 8)

**3808 V. BARSUKOV,
 V. ZENKOV**
 Sankt Peterburgas, Rusija



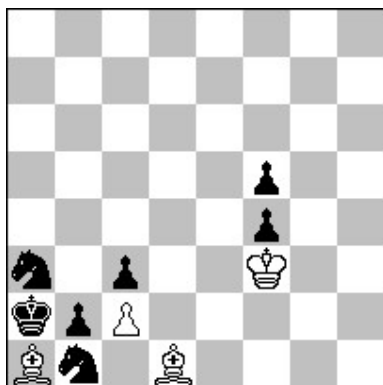
h # 3 2.1.1.1.1.1 (4 + 13)

3809 M. RIMKUS
 Kriūkai



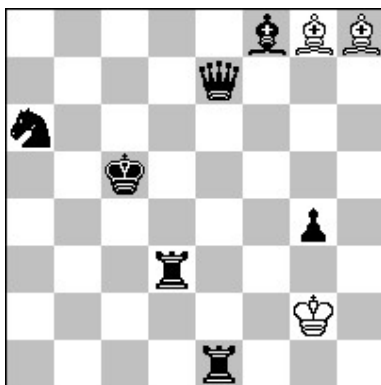
h # 4 2.1.1... (3 + 4)

3810 N. ZUJEVAS
Klaipėda



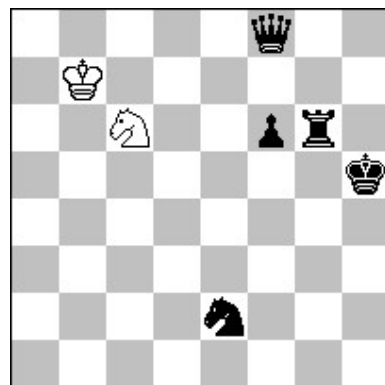
h # 4* (4 + 7)

3811 M. RIMKUS
Kriūkai



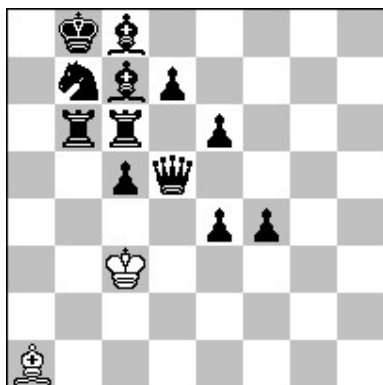
h # 4,5 0.3.1... (3 + 7)

3812 P. STOJOSKI
Skoplë, Makedonija



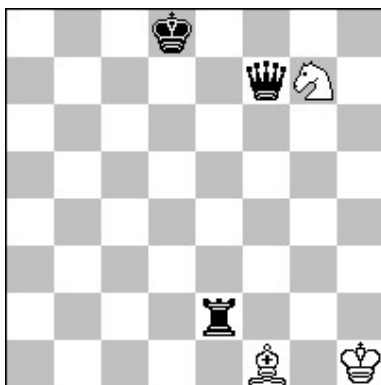
h # 5 (2 + 5)

3813 P. STOJOSKI
Skoplë, Makedonija



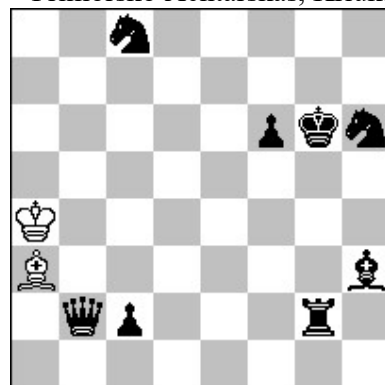
h # 5 (2 + 12)

3814 M. RIMKUS
Kriūkai



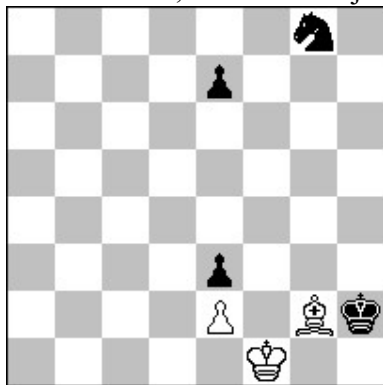
h # 5,5 0.2.1... (3 + 3)

**3815 V. KLIPAČIOV,
M. RIMKUS**
Primorsko Ahtarskas, Kriūkai



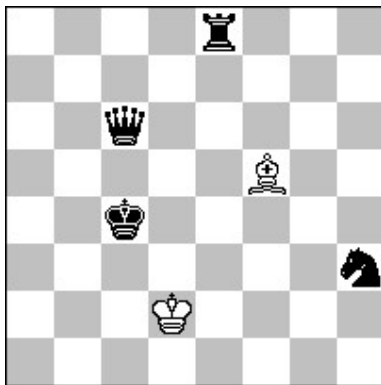
h # 6 b)c2→e5 (2 + 8)

**3816 M. RIMKUS,
E. FOMIČIOV**
Kriūkai /Šatki, Lietuva /Rusija



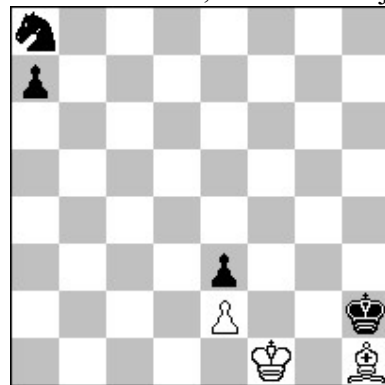
h # 7 (3 + 3)

3817 V. PALIULIONIS
Vilnius



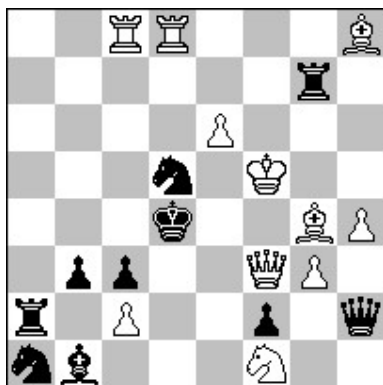
h # 7,5 (2 + 4)

**3818 M. RIMKUS,
F. FOMIČIOV**
Kriūkai /Šatki, Lietuva /Rusija



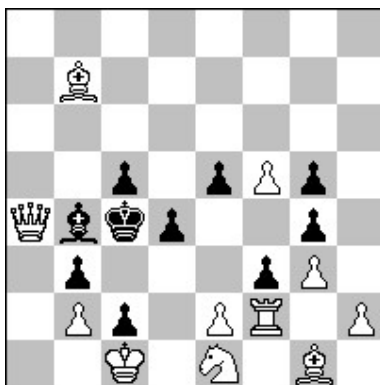
h # 7,5 (3 + 4)

3819 A. AŽUSIN
Tverė, Rusija



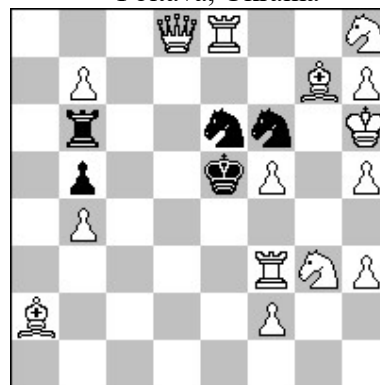
s # 2 (11 + 10)

3820 Z. LABAI
Velky Kyras, Slovackija



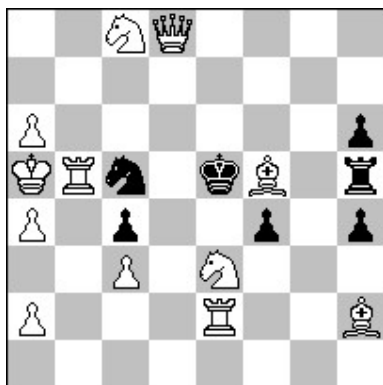
s # 3 (11 + 10)

**3821 G. KOZIŪRA,
V. KOPIL**
Poltava, Ukraina



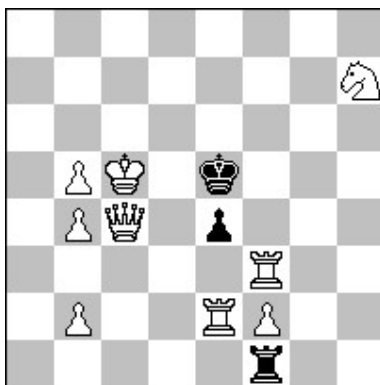
s # 4 (15 + 5)

3822 E. FOMIČIOV
Šatki, Rusija



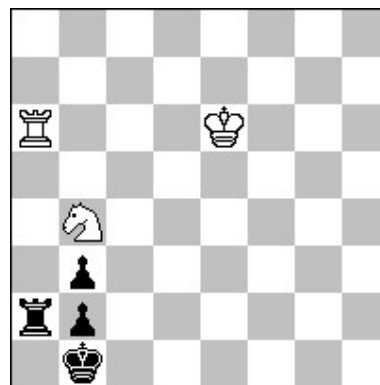
s # 5v (12 + 7)

3823 A. AŽUSIN
Tverė, Rusija



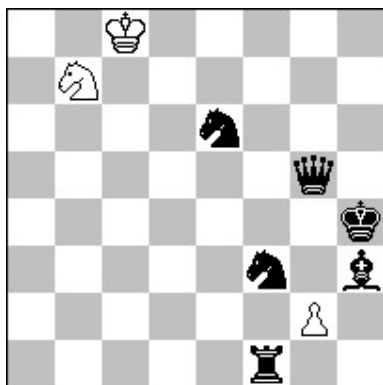
s # 16 (9 + 3)

3824 S. ŠALETIĆ
Belgradas, Serbija



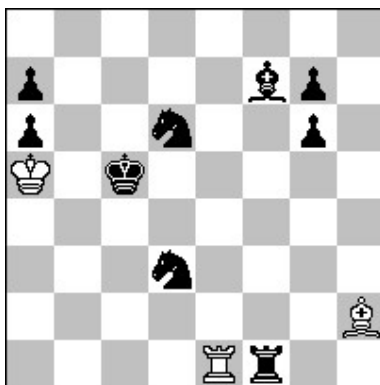
h = 2 b)a2jR (3 + 4)

3825 A. VILKAUSKAS
Šilutė



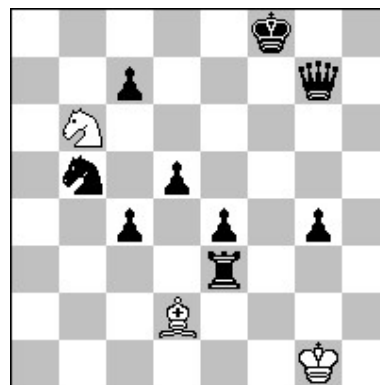
h # 2 2.1.1.1 (3 + 6)
Kerti-Eini

3826 A. VILKAUSKAS
Šilutė



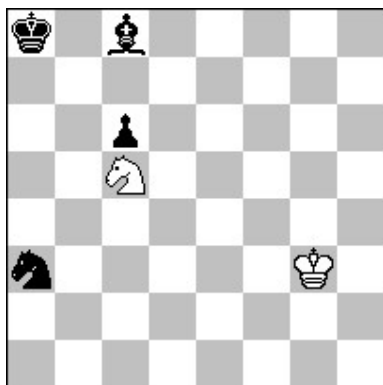
h # 2 4.1.1.1 (3 + 9)
Kerti-Eini, Annan

3827 A. VILKAUSKAS
Šilutė



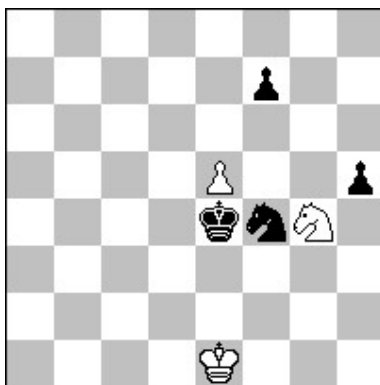
h # 2 2.1.1.1 (3 + 9)
Kerti-Eini, KoBul Karaliai

3828 A. BIČIUŠAS
Klaipėda



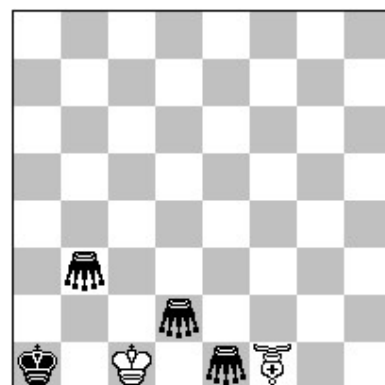
h # 4 b)Ža3→b5 (2 + 4)
Kirkė, Einšteinas

3829 A. BIČIUŠAS
Klaipėda



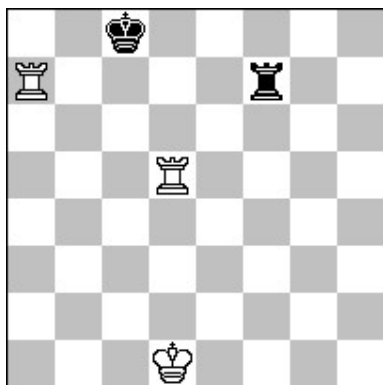
h # 4 b)h5→f6 (3 + 4)
Kirkė, Einšteinas

3830 V. KOTĚŠOVEC
Praha, Čekija



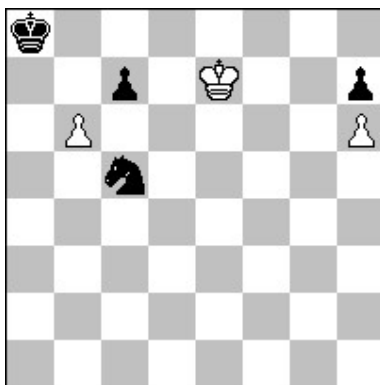
h # 12 2.1.1... (2 + 4)
(f1 bishophopper)

3831 V. KOTĚŠOVEC
Praha, Čekija



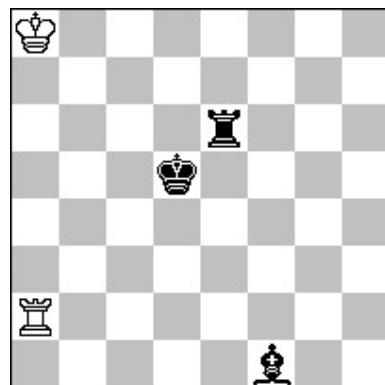
hs = 14 (3 + 2)
Madrasas

3832 L. KEKELY
Snežnica, Slovákija



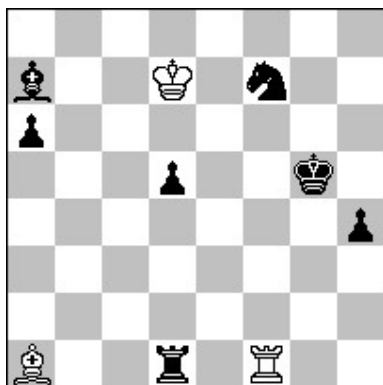
ser-hs # 15 (3 + 4)
Transmuted kings

3833 V. BARSUKOV
Sankt Peterburgas, Rusija



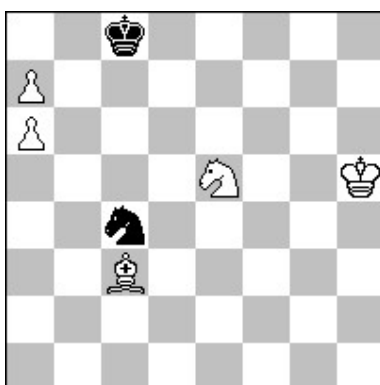
s # 5 b)Kd5→c8 (2 + 3)
Max

3834 A. JELCOV
Sankt Peterburgas, Rusija



s # 5 Max (3 + 5)

3835 S. ŠALETIĆ
Belgradas, Serbija



ss # 13 (5 + 2)

**Gerbiami skaitytojai,
sprendimus, komentarus,
pastabas ir pasiūlymus iki
2018 09 30 siųskite
Mečislovui Rimkui**

**Pušyno g. 1-2,
LT-71215 Kriūkai,
Šakių rj.,
LITHUANIA**

*Dear chessfriends,
Please send your solutions and
comments by 30 September 2018
to Mečislovas RIMKUS*