

NAUJI UŽDAVINIAI Nr.1/2016

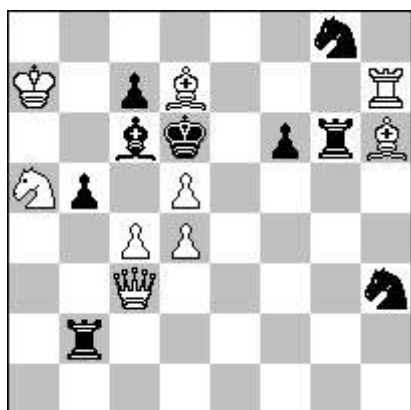
ORIGINALS *** INEDITES *** URDRUCK *** ПУБЛИКУЕТСЯ ВПЕРВЫЕ

Skyrelį tvarko:

Vilimantas SATKUS
Parko g. 2A,
LT-58351 Akademija, Kėdainių rj., Lithuania
vilimantas.satkus@gmail.com

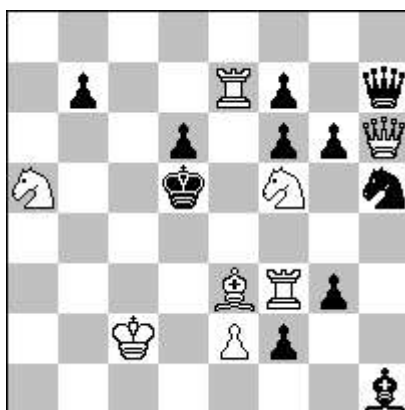
Šįsyk mūsų leidinyje debiutuoja patyrę problemistai Jozefas (Josef) Burda iš *Haviřov-Podlesí*, (Čekija) bei Nikolajė (Nicolae) Popa iš *Arsura-Vaslui* (Rumunija) ir pradedantysis kompozitorius Peteris Slavikas (Peter Slávik) iš Slovakijos. *Sveiki atvykę! Welcome in „Šachmatija“!*

3273 E. ABDULLAYEV
Širvanė, Azerbaidžanas



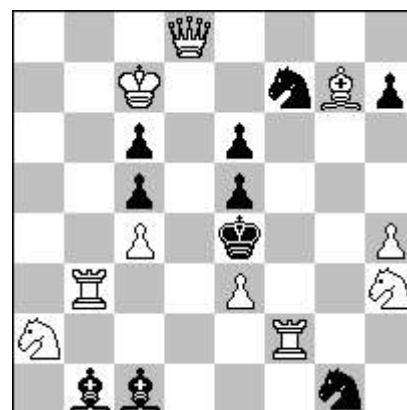
2 (9 + 9)

3274 J. BURDA
Haviřovas, Čekija



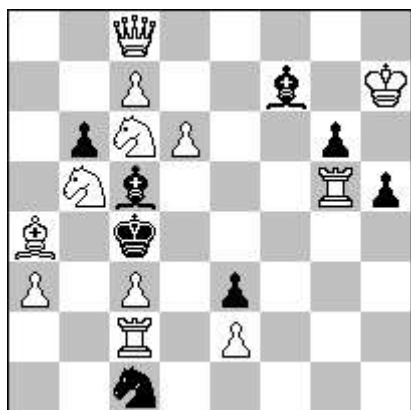
2 (8 + 11)

3275 V. ROMANOVSKIS
Ludza, Latvija



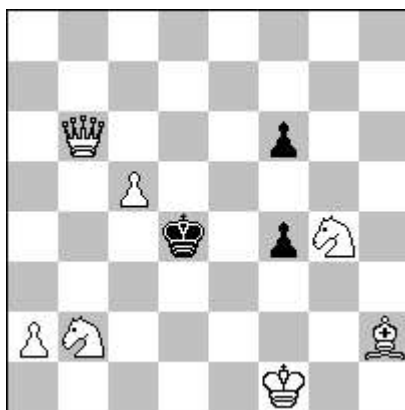
2*vv (10 + 10)

3276 N. POPA
Arsura - Vaslui, Rumunija



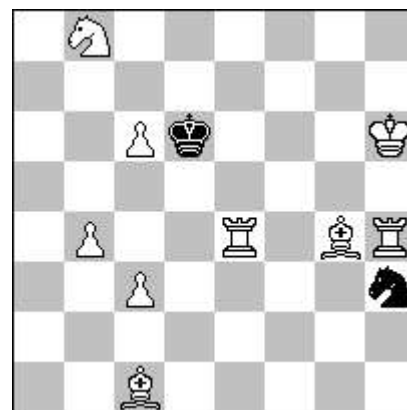
2* v (12 + 8)

3277 P. PETRAŠINOVIĆ
Belgradas, Serbija



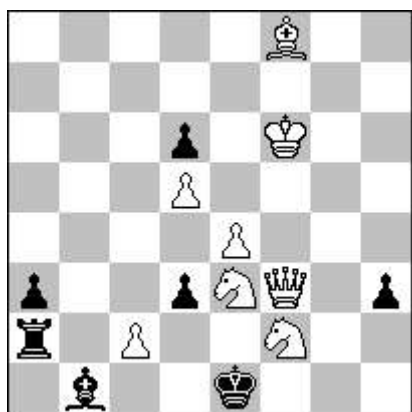
#3 v (7 + 3)

3278 P. PETRAŠINOVIĆ
Belgradas, Serbija



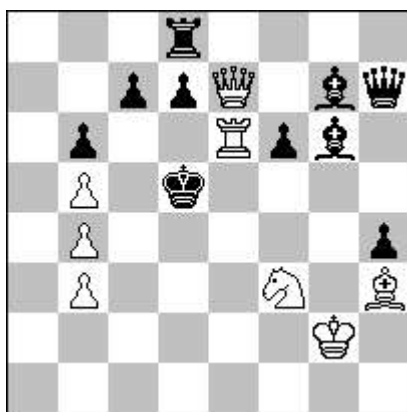
#3 v (9 + 2)

3279 E. FOMIČIOV
Šatki, Rusija



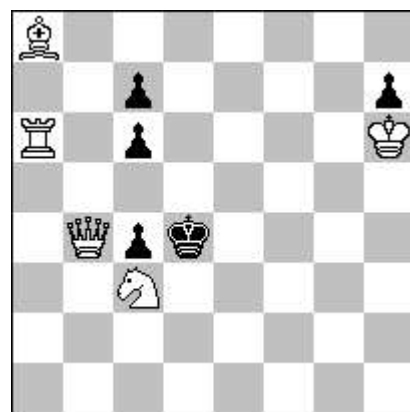
#3 (8 + 7)

3280 M. CIOFLÂNCĂ
Piatra Neamcas, Rumunija



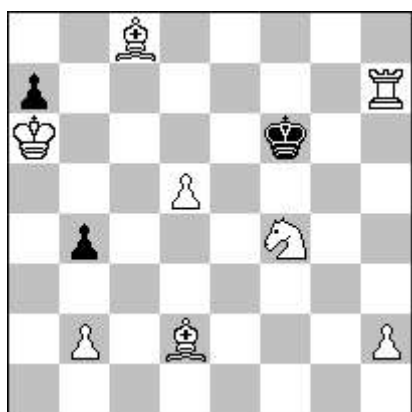
#3 (8 + 10)

3281 P. PETRAŠINOVIĆ
Belgradas, Serbija



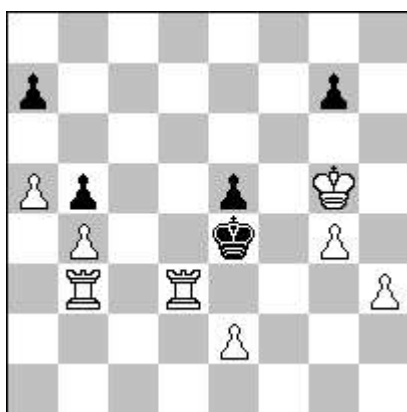
#4 (5 + 5)

3282 P. PETRAŠINOVIĆ
Belgradas, Serbija



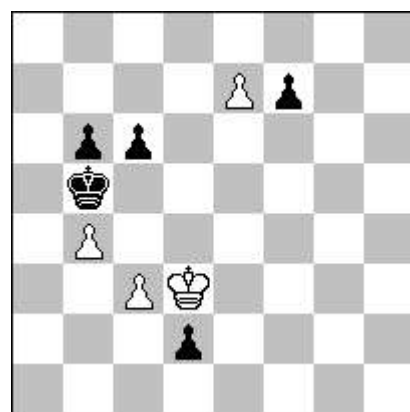
#4 (8 + 3)

3283 V. BARSUKOV
Sankt Peterburgas, Rusija



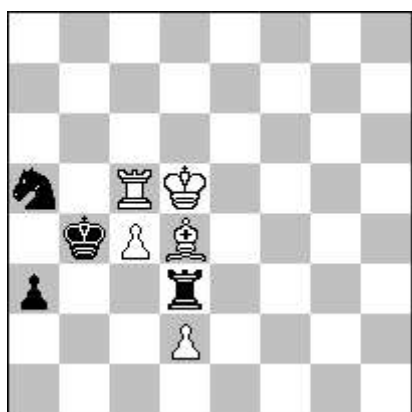
#5 b)a7→a6 (8 + 5)

3284 S. ŠALETIĆ
Belgradas, Serbija



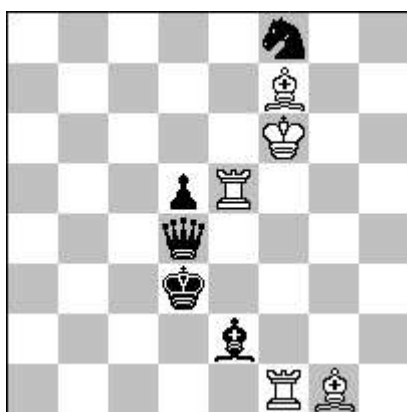
h #2 Dvigubas (4 + 5)

3285 J. F. CARF
La Ferté Saint Aubin, Prancūzija



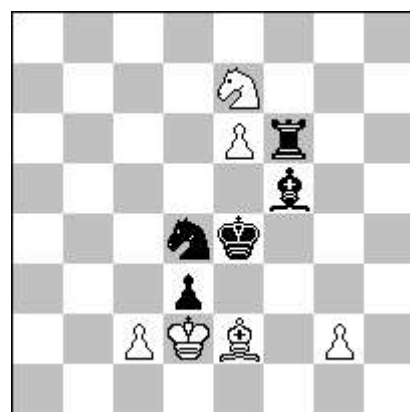
h #2 2.1.1.1 (5 + 4)

3286 E. ABDULLAYEV
Širvanë, Azerbaidžanas



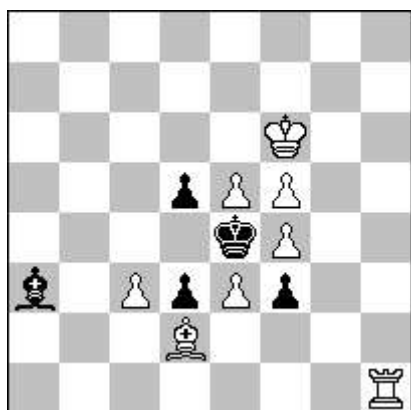
h #2 3.1.1.1 (5 + 5)

3287 V. KLIPAČIOV
Primorsko Achtarskas, Rusija



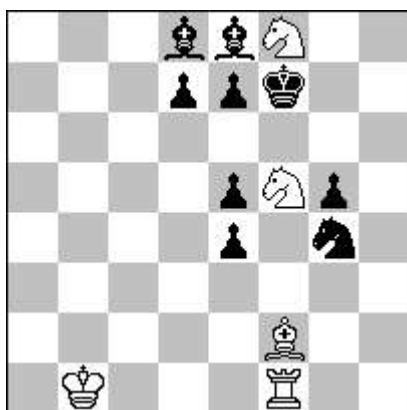
h #2 3.1.1.1 (6 + 5)

3288 S. ŠALETIĆ
Belgradas, Serbija



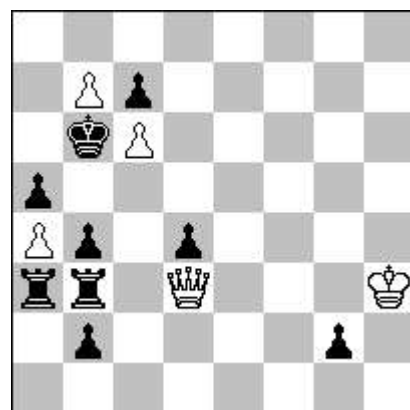
h # 2 2.1.1.1 (8 + 5)

3289 V. BARSUKOV
Sankt Peterburgas, Rusija



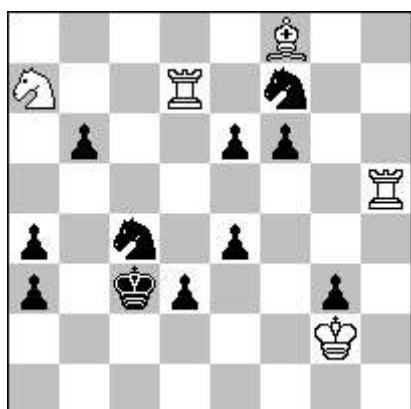
h # 2 2.1.1.1 (5 + 9)

3290 M. CIOFLÂNCĂ
Piatra Neamcas, Rumunija



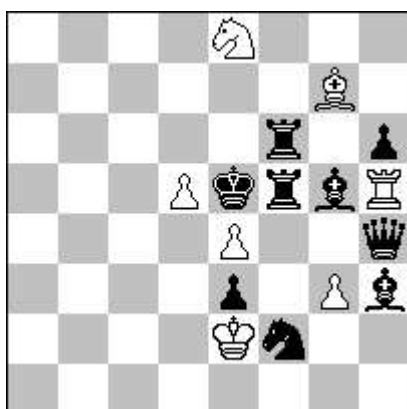
h # 2 2.1.1.1 (5 + 9)

3291 Ž. JANEVSKI
Gevgelija, Makedonija



h # 2 2.1.1.1 (5 + 11)

3292 N. POPA
Arsura - Vaslui, Rumunija



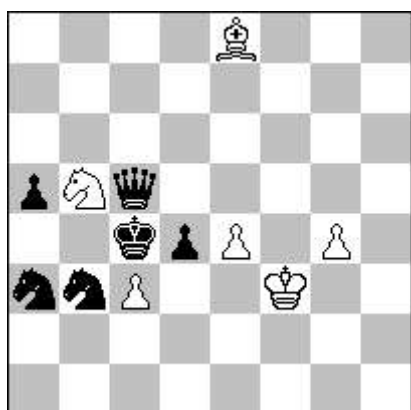
h # 2 3.1.1.1 (7 + 9)

3293 N. POPA
Arsura - Vaslui, Rumunija



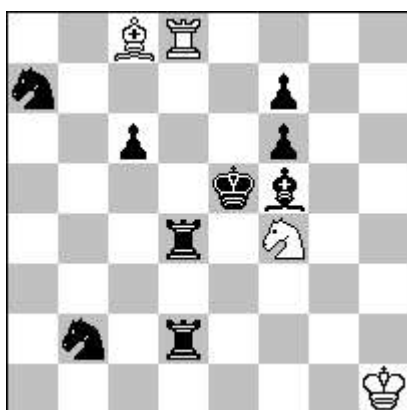
h # 2 2.1.1.1 (8 + 10)

3294 N. POPA
Arsura - Vaslui, Rumunija



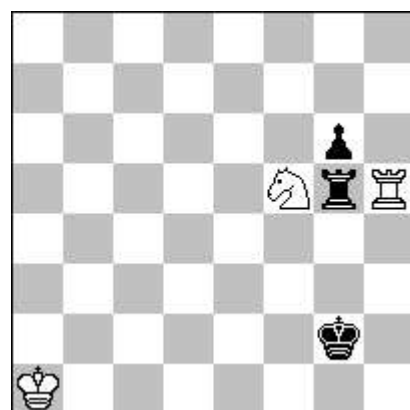
h # 2,5 b)c3→c6 (6 + 6)

3295 A. ONKOUD
Stenas, Prancūzija



h # 2,5 0.4.1.1.1.1 (4 + 9)

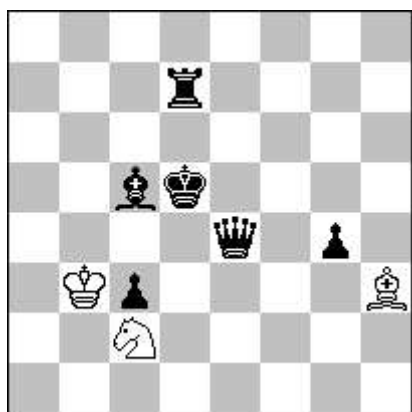
3296 V. BARSUKOV
Sankt Peterburgas, Rusija



h # 3 2.1.1.1.1.1 (3 + 3)

3297 V. KLIPAČIOV

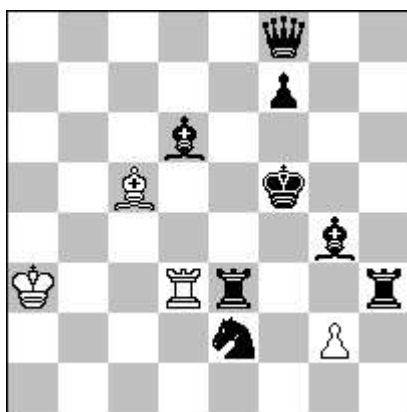
Primorsko Ačtarskas, Rusija



h # 3 2.1.1.1.1.1 (3 + 6)

3298 A. ONKOUD

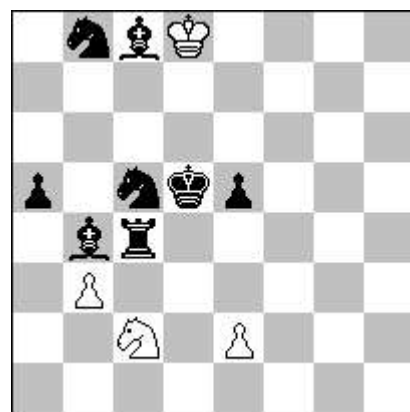
Stenas, Prancūzija



h # 3 2.1.1.1.1.1 (4 + 8)

3299 N. POPA

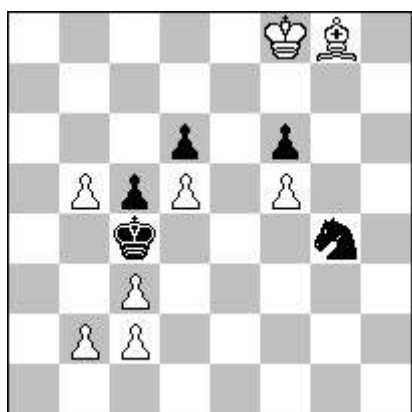
Arsura - Vaslui, Rumunija



h # 3 2.1.1.1.1.1 (4 + 8)

3300 S. ŠALETIĆ

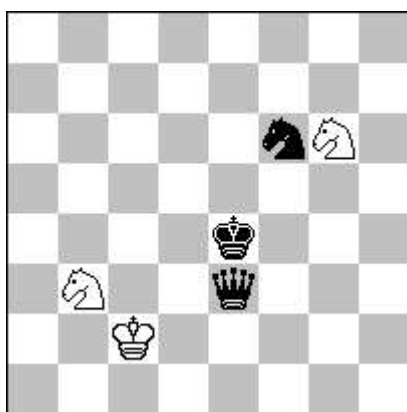
Belgradas, Serbija



h # 3* (8 + 5)

3301 V. PALIULIONIS

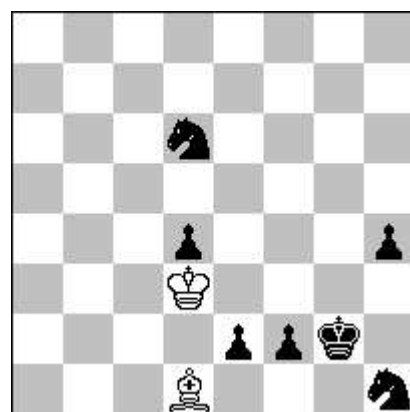
Vilnius



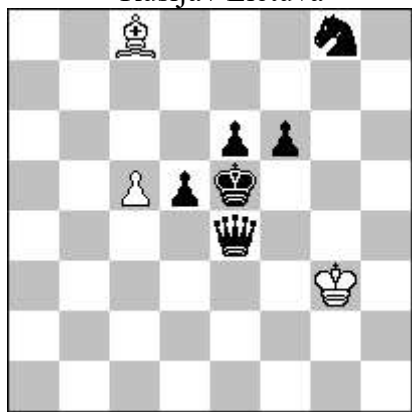
h # 3,5 0.3.1... (3 + 3)

3302 M. RIMKUS

Kriūkai

h # 4 2.1.1... (2 + 7)
b)Rd1→e6**3303 V. BARSUKOV,
V. PALIULIONIS**

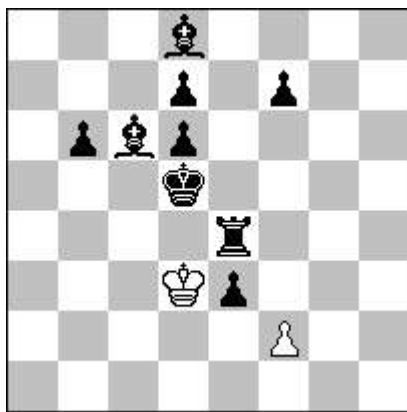
Rusija / Lietuva



h # 4 b)Zg8→f6 (3 + 6)

3304 P. SLÁVIK

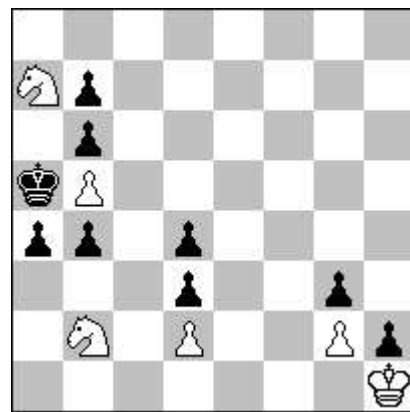
Slovakija



h # 4 b)Rc6→e6 (2 + 9)

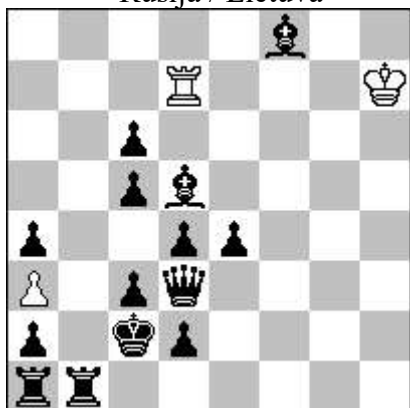
3305 S. ŠALETIĆ

Belgradas, Serbija



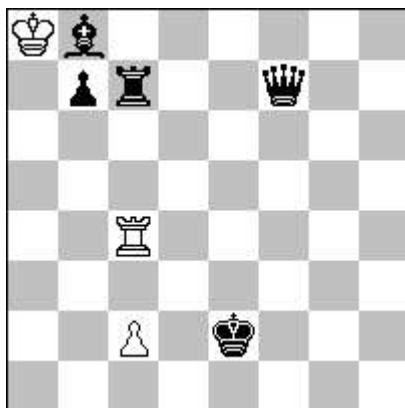
h # 4* (6 + 9)

**3306 V. KLIPAČIOV,
M. RIMKUS**
Rusija / Lietuva



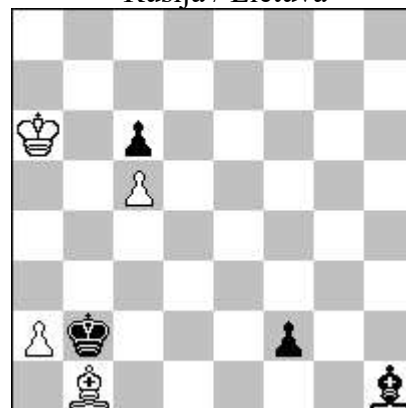
h # 4 (3 + 14)

3307 M. RIMKUS
Kriūkai



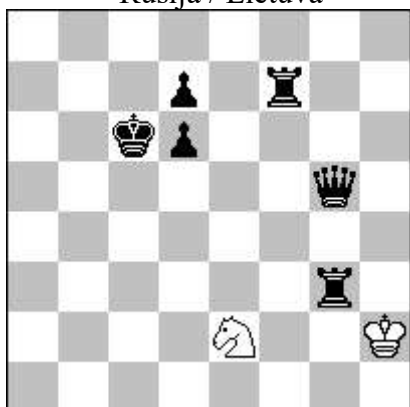
h # 5 b)Bc4→c3 (3 + 5)
c)-Bc7 d)+Rb8→d2

**3308 N. KRAVCOV,
V. PALIULIONIS,**
Rusija / Lietuva



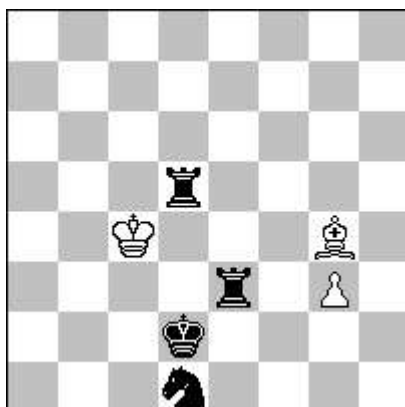
h # 5,5 0.3.1... (4 + 4)

**3309 V. KLIPAČIOV,
M. RIMKUS**
Rusija / Lietuva



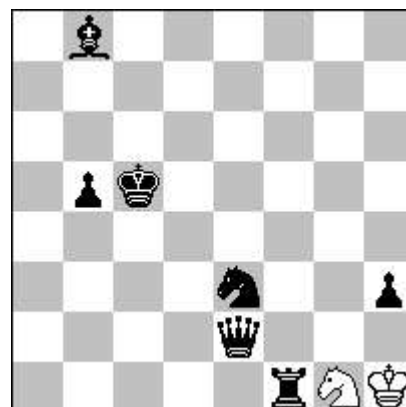
h # 5,5* (2 + 6)

3310 M. RIMKUS, J. CARF
Lietuva / Prancūzija



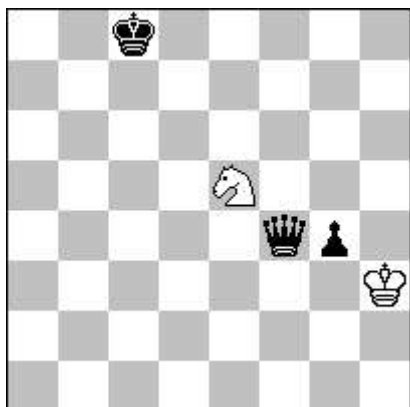
h # 6 2.1.1... (3 + 4)

3311 V. KLIPAČIOV
Primorsko Ahtarskas, Rusija



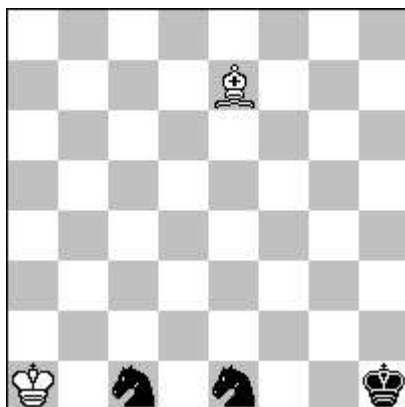
h # 6 (2 + 7)

3312 V. BARSUKOV
Sankt Peterburgas, Rusija



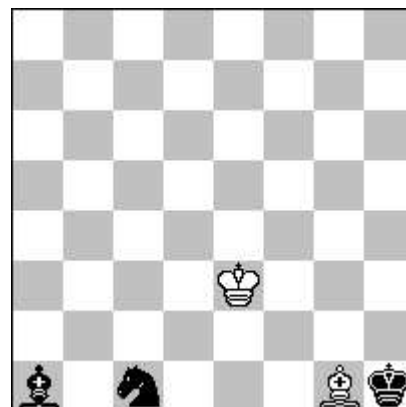
h # 6,5 0.2.1... (2 + 3)

3313 J. CARF
La Ferté Saint Aubin, Prancūzija



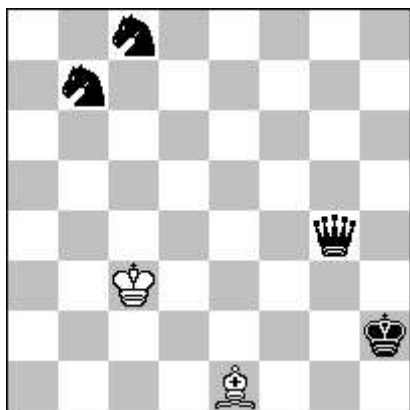
h # 8 (2 + 3)

3314 J. CARF
La Ferté Saint Aubin, Prancūzija



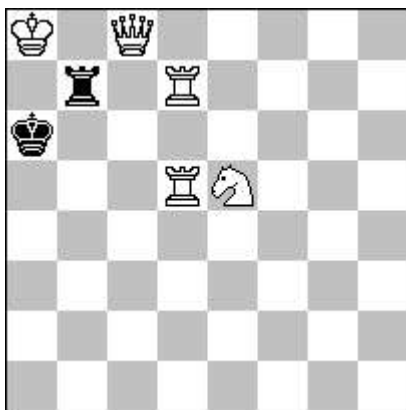
h # 8 (2 + 3)

3315 V. PALIULIONIS
Vilnius



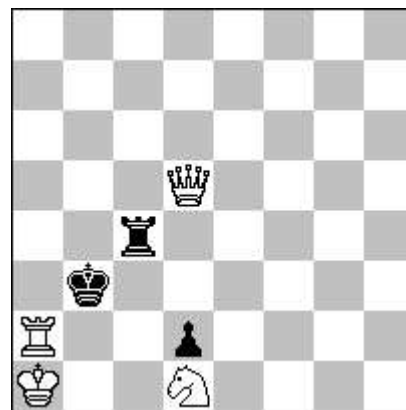
h # 9,5 (2 + 4)

3316 V. SURKOV
Maskva, Rusija



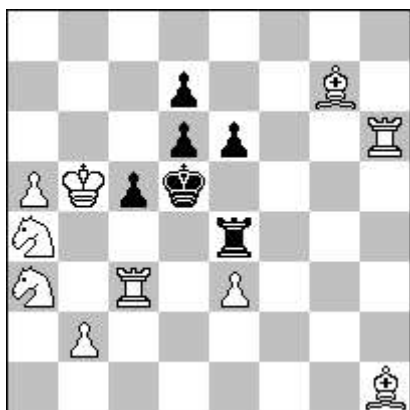
s # 5 b)Bd7→d8 (5 + 2)
c)Ka6→b6

3317 V. SURKOV
Maskva, Rusija



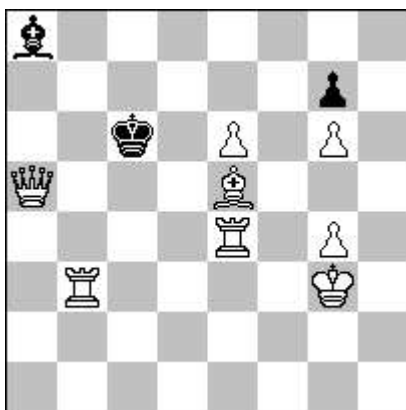
s # 8* (4 + 3)

3318 M. BABIĆ
Belgradas, Serbija



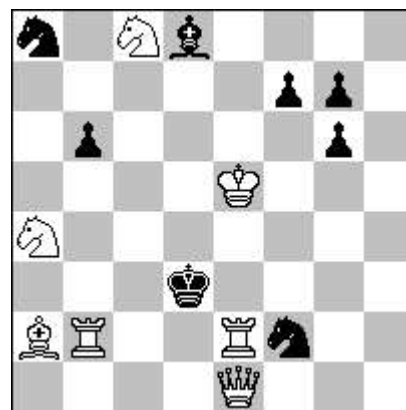
s # 10 (10 + 6)

3319 M. BABIĆ
Belgradas, Serbija



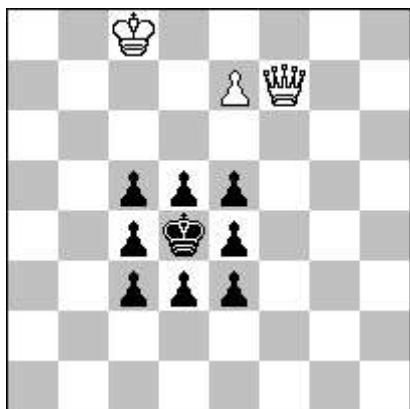
s # 11 (8 + 3)

3320 E. ORLOV
Aleksandrija, Ukraina



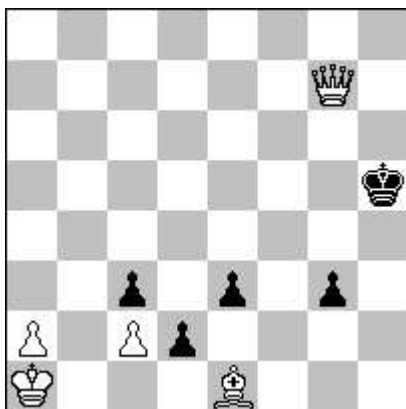
s # 14 (7 + 8)

3321 V. KOŽAKIN
Magadanas, Rusija



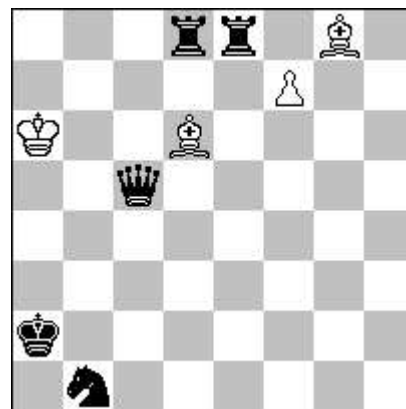
#3 Kōko (3 + 9)

3322 S. ŠALETIĆ
Belgradas, Serbija



h = 3 2.1.1.1.1.1 (5 + 5)

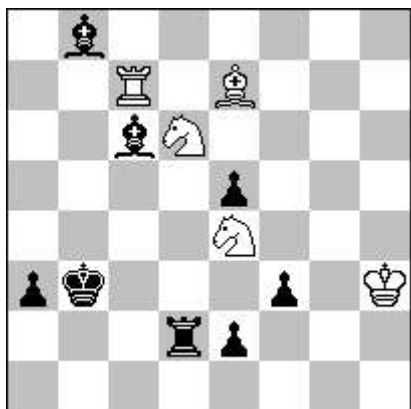
3323 D. GRINČENKA,
Jasinovataja, Ukraina



h # 2 3.1.1.1 (4 + 5)

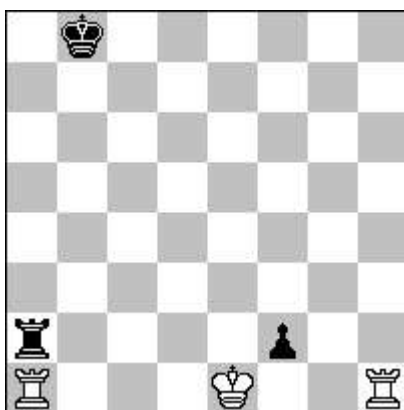
Funkciniai šachmatai
(Functionary Chess)

3324 P. TRITTEN
Ganji, Prancūzija



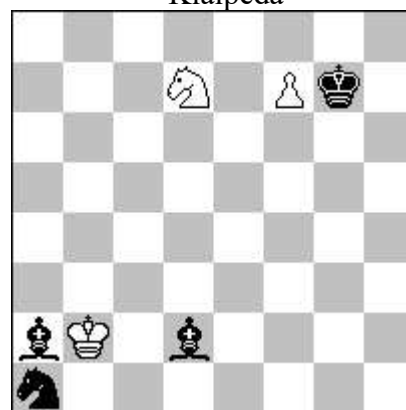
h # 2 2.1.1.1 (5 + 8)
Kerti-eini; (Take&Make)

3325 A. STIPOČKIN
Tula, Rusija



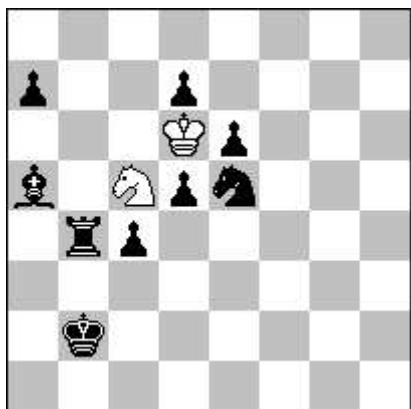
h # 3,5 b)lb8→b7 (3 + 3)
Köko

**3326 N. ZUJEVAS,
A. BIČIUŠAS**
Klaipėda



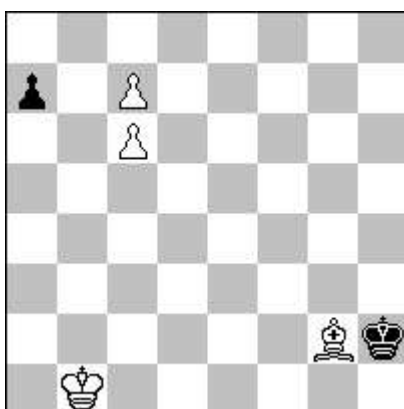
hs # 5 (3 + 4)

3327 A. ARMENI
Roma, Italija



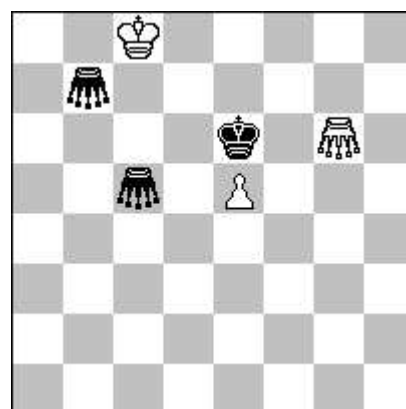
Pser-h # 6 (2 + 9)
Veidrodinė kirkė
(Mirror circe)

3328 A. BIČIUŠAS
Klaipėda



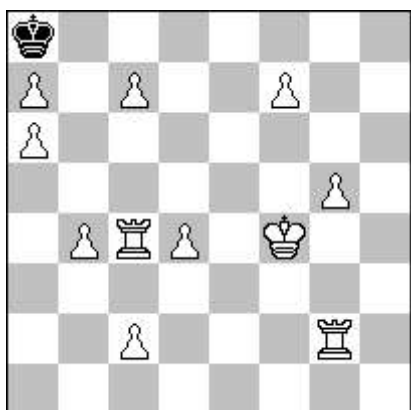
sh # 7 2.1.1 (4 + 2)

3329 V. KOTĚŠOVEC
Praha, Čekija



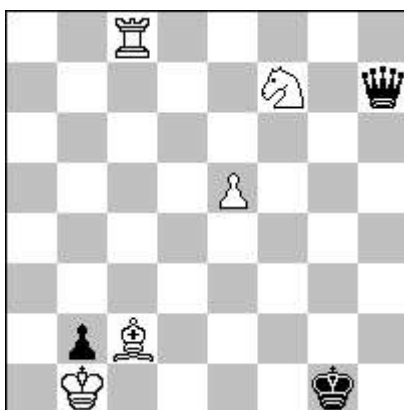
sh = 9 2 sprend (3 + 3)
Kirkė keitėja (PWC)

3330 S. ŠALETIĆ
Belgradas, Serbija



sh = 20* (11 + 1)

3331 V. BARSUKOV
Sankt Peterburgas, Rusija



s # 4 Max (5 + 3)

**Gerbiami skaitytojai,
sprendimus, komentarus,
pastabas ir pasiūlymus iki
2016 06 30 siųskite
Mečislovui Rimkui**

**Pušyno g. 1-2,
LT-71215 Kriūkai,
Šakių rj.,
LITHUANIA**

*Dear chessfriends,
Please send your solutions, and
comments by 30 June 2016 to
Mečislovas RIMKUS*