

DOM Kenneth Solja 55 JT

First of all I would like thank Rolf Uppström for being the neutral judge.

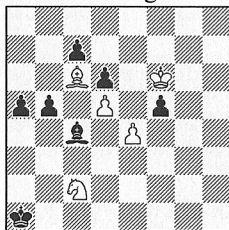
I got from him 13 problems that somehow show longer helpmates with setplay or duplex with at least two solutions (setplay+solution or in duplex helpmate 1+1 solution). The quality of these problems wasn't high, which you can see yourself from the award.

I looked through the problems and I found one (Kb1-Kf6) that hasn't setplay or duplex, so I have to disqualify this problem. For the award I now had only 12 problems, quite low number. Is long helpmate with setplay or long duplex helpmate really so hard to handle? I really don't believe this is the case. However, in this composing tourney, the overall quality wasn't high, but the prizes show very high quality!

In fact all prizes are different kinds of problems. Out of 12 problems there were 9 problems in h#3, 2 in h#3,5, 1 h#4,5 and one problem in h#8. Among the problems there were only two duplex helpmates, these are both in this award.

1st Prize

Christer Jonsson
& Rolf Wiehagen



h#3,5 duplex

Beautiful and accurate play in this duplex helpmate for both sides. Two bishop Rundlaufs and dual avoidance in nice light setting where all the pieces are needed in both solutions. Excellent work!

Black to move:

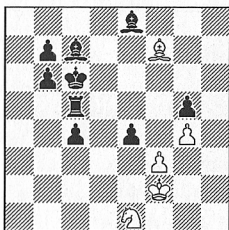
1. - Lxb5 2.Kb3 La6 3.Ka4 Lb7 (Lc8?) 4.Lb3 Lc6#

White to move:

1. - Lxd5 2.Sd4 Lxe4 3.Ke6 Ld3 (Lc2?) 4.Kd5 Lc4#

2nd Prize

Jorma Pitkänen



h#3 4 solutions

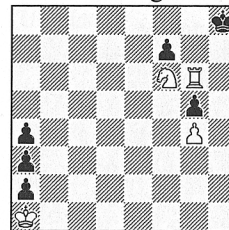
Here we have the best setplay helpmate in this tourney: One setplay and four solutions is quite an achievement. However the Sg6-mate is a bit dull because black moves only his king and white his shining knight (the white bishop is also needed in this mate). There are only two modelmates out of four and the white knight is not needed at all in the setplay.

Despite all this I will give the problem a higher rank than it might deserve, because in a way I like it.

1. - fxe4 2. Sf6 e5 3. Sd5 Lxe8#
1.Td5 Sd3 2. Td6 Lxc4 3. Sc5 Se5#
1.Kd6 Sg2 2. Ke5 Sh4 3. Kf4 Sg6#
1.Ld6 Lxe8 2. Kd5 Sd3 3. Tc6 Lf7#
1.Se5 Le6 2. Sf7 Sc2 3. Sd6 Sd4#

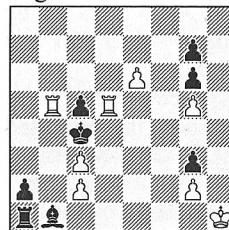
3rd Prize

Mirko Degenkolbe
& Rolf Wiehagen



h#8*

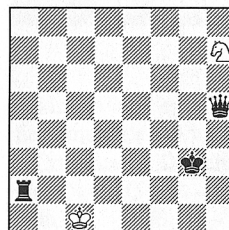
Honourable Mention
Eugene Fomichev



h#3* 3 solutions

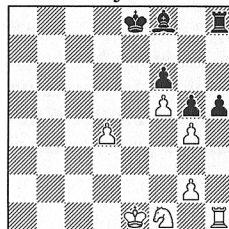
Commended

Viktoras Paliulionis



h#4,5** 2 solutions

Walter Alejandro Diaz



h#3 duplex

This is longest helpmate of this tourney and it has what is asked for in the announcement: setplay and solution. The rook is only used in the setplay, which is funny, because it is such a powerful piece. Also a well handled position and both mates comes from the same square.

1. - Tg8#

1.fxg6 Kxa2 2.Kg7 Kxa3 3.Kh6 Kb4 4.a3 Kc5 5.a2 Kd6
6.a1T Ke7 7.Ta7 Kf8 8.Th7 Sg8#

In this problem I did not think much of the setplay-mates, and one other disturbing thing to me were the black pieces Ra1-Bb1-Pa2. They are taking care of two cooks, but look awful. Black captures white pieces and the white e-pawn promotes to rook and queen. The mates are quite simple.

1. - Tbxc5#; 1. - Tdxc5#

1.Kxb5 e7 2.Ka4 e8T 3.c4 Ta8#

1.Kxd5 e7 2.Ke6 Tb8 3. Kf7 e8D#

1.Kxc3 Tf5 2.Kxc2 Tb2+ 3.Kd1 Tf1#

Nice idea, but I'm afraid that this is too mechanical to my taste, although I like the idea.

Funny how the author has managed to switch places between setplays and solutions. Three echo-mates, but the fourth one is a bit different. A white minimal and the only miniature in this award, hopefully original.

Setplays: 1.Ta4 Kd2 2.Dh2+ Ke3 3.Kh3 Kf3 4.Th4 Sg5#

1.Tg2 Sg5 2.Kf2 Kd2 3.Kg1+ Ke1 4.Dh1 Sf3#

Solutions:

1. - Sf6 2.Ta3 Kd2 3.Dh1 Ke2 4.Kh2 Kf2 5.Th3 Sg4#

1. - Sf8 2.Ta5 Kd2 3.Dh3 Ke3 4.Kh4+ Kf4 5.Th5 Sg6#

Nice idea in duplex: Castlings, but too simple to go any higher, hopefully not anticipated.

Black to move: 1. Lg7 Sg3 2. 0-0 Sxh5 3. Kh7 Sxf6#

White to move: 1. Sd2 Lc5 2. 0-0 Lxd4 3. Kh1 hxg4#

I would like to thank all the participants.

Problems that are not in this award go back their authors.

Espoo 23.7.2012 Kenneth Solja