

The 19th Japanese Sake Tourney

Theme: H#2 Point Reflection. Fairy pieces and/or other fairy conditions are not allowed. We receive only computer-tested problems. Point Reflection is supported in the oncoming Popeye 4.83 which will be released in a short time.

Judges: Tadashi Wakashima, Toshiki Kobayashi and Hitoshi Yanami.

Send to: tadashi@hcn.zaq.ne.jp

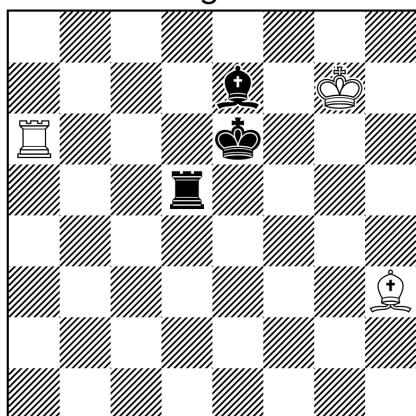
Closing Date: Thursday, 22 August 2019

Prizes: Bottles of Sake. Only congress participants can receive bottles.

Definition

Point Reflection: When two pieces of any color stand on the squares which are symmetric with respect to the central point of the chessboard (eg. a1-h8, b3-g6), they exchange their roles (i.e. powers of movement). A Pawn on the first rank and its corresponding piece on the eighth rank cannot move by themselves. Only non-reflected K and R can castle, and only non-reflected Ps can make en passant.

Ex.1 Ken Kousaka
Original

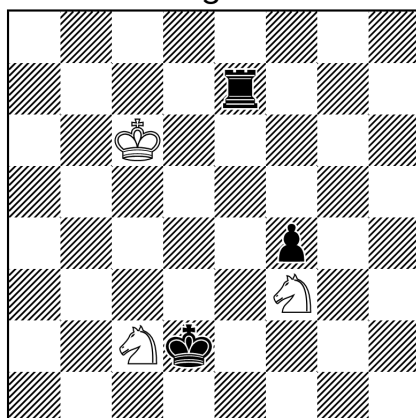


In the diagram position, bK is not checked because wRa6 and wBh3 exchange their roles.

- a) 1.Bd6 Re2#
- b) 1.Rd7 Bb3#

H#1 b)Kg7→f4 (3+3)
Point Reflection

Ex.2 Ken Kousaka
Original



1.Kd5+ Se4#

The mating move is a cross-doublecheck from wKc6 and wSe4. Note that all flight squares (c3, b4, b6, c7, f6, e3) are covered.

H#1 (3+3)
Point Reflection